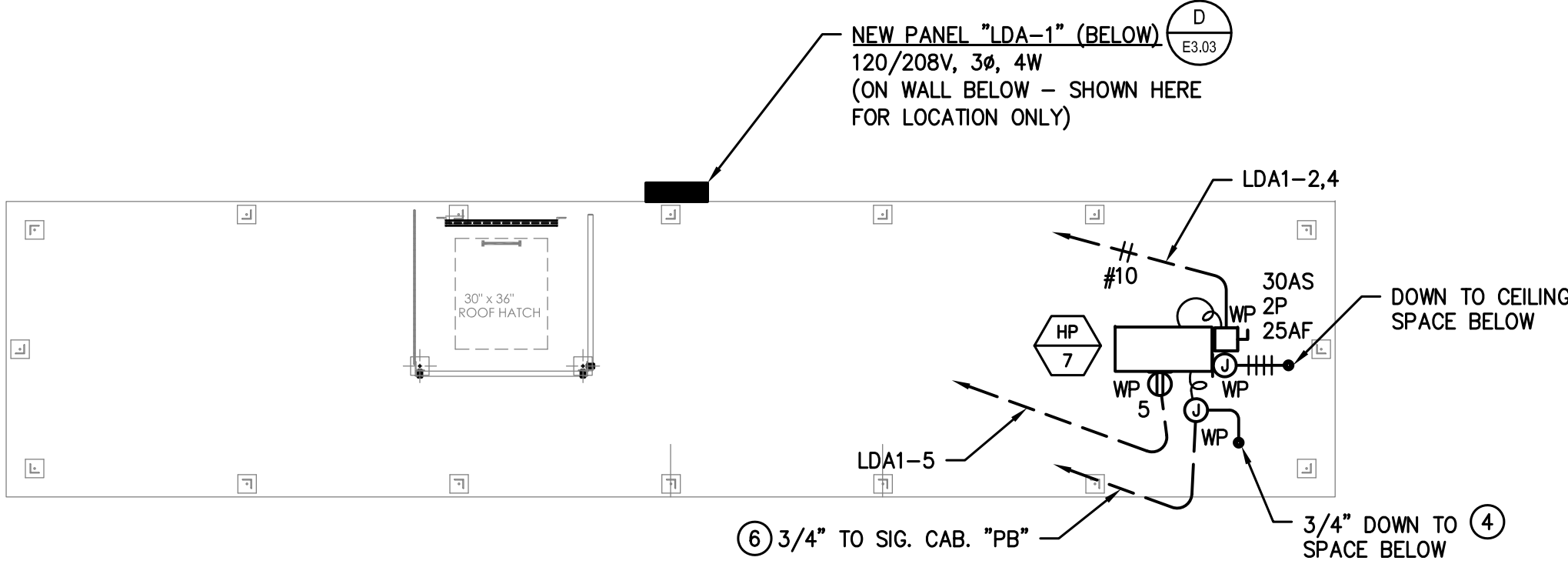


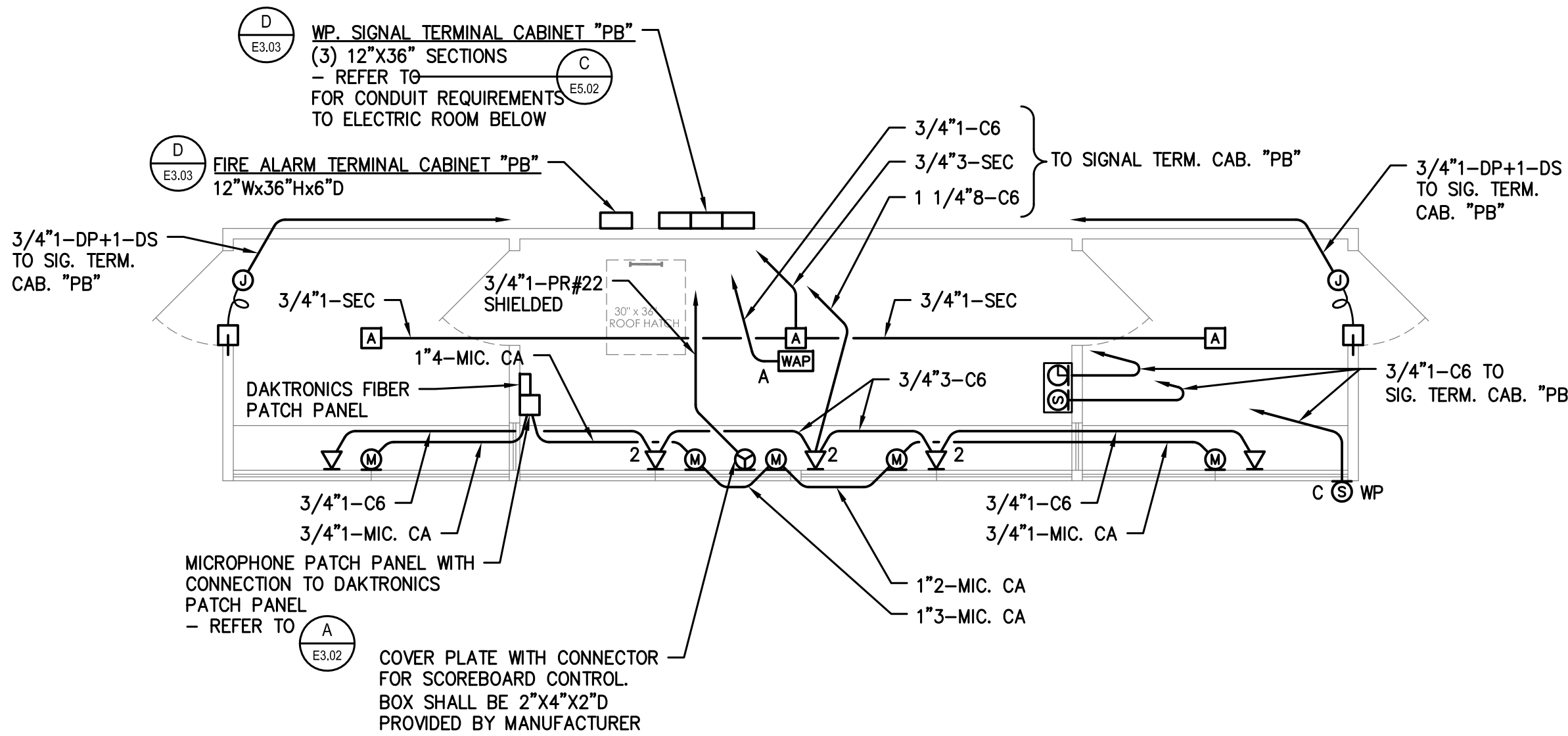
KEYNOTES - THIS SHEET ONLY

- 1 PANEL FURNISHED WITH PRESS BOX. CONNECT TO NEW PANEL "LDA-1" AS NOTED ON THE SINGLE LINE DIAGRAM.
- 2 PANEL FURNISHED WITH 1 1/2" C.O. STUB-OUT (THRU WALL). INTERCEPT AND INSTALL CONDULET FITTING AND EXTEND TO NEW PANEL "LDA-1" AS INDICATED.
- 3 MOUNT ON EXTERIOR WALL OF PRESS BOX. COORDINATE EXACT LOCATION IN THE FIELD.
- 4 REFER TO MECHANICAL CONTROL DIAGRAMS (M0.03 & M0.04) FOR CABLE/CONDUCTOR REQUIREMENTS.
- 5 3/4" UP TO HP-7 ON ROOF.
- 6 COORDINATE CABLE INSTALLATION WITH CONTROLS CONTRACTOR. CABLE SHALL BE INSTALLED BACK TO "DF-ER" IN BUILDING "X".



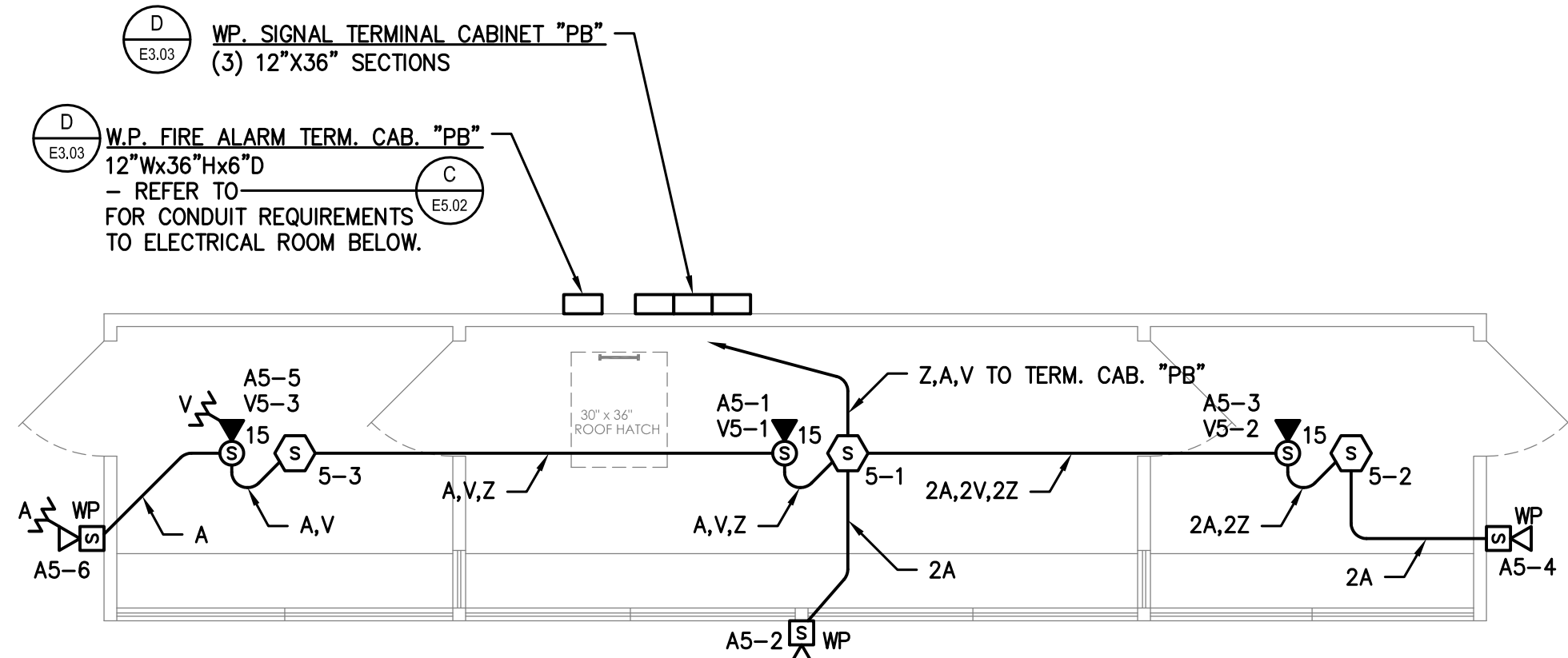
PRESS BOX FLOOR PLAN - ELECTRICAL

SCALE: 1/4" = 1'-0"



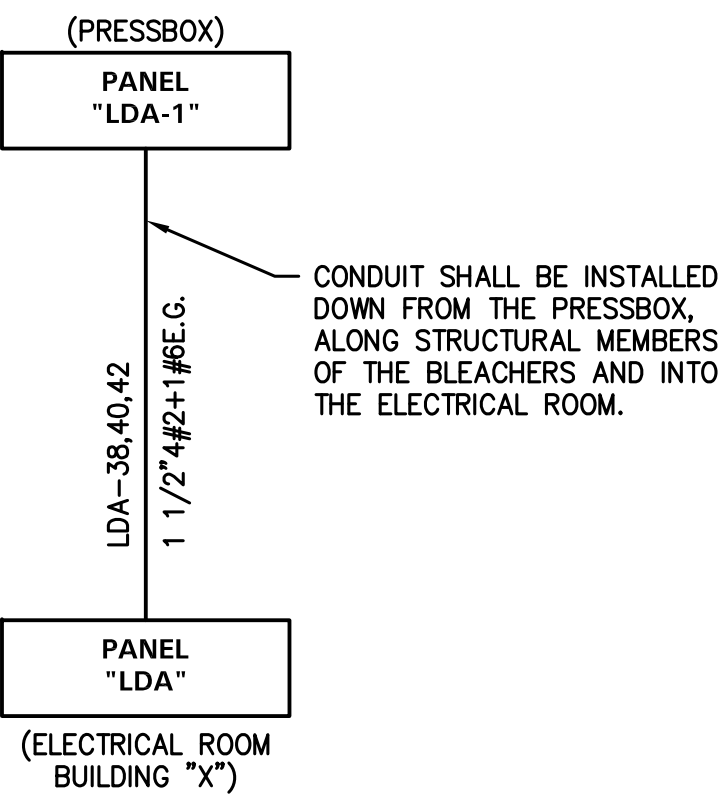
PRESS BOX FLOOR PLAN - SIGNAL

SCALE: 1/4" = 1'-0"



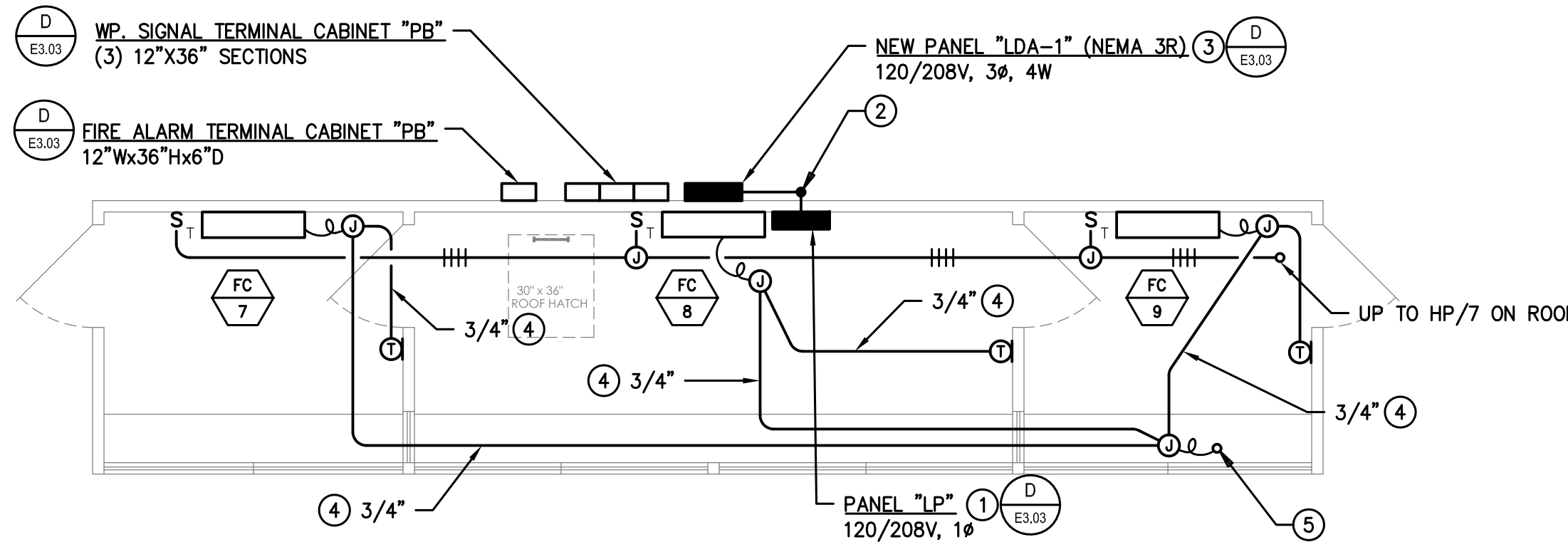
PRESS BOX FLOOR PLAN - FIRE ALARM

SCALE: 1/4" = 1'-0"



POWER FROM ELECTRICAL ROOM TO PRESSBOX

NO SCALE



PRESS BOX FLOOR PLAN - POWER

SCALE: 1/4" = 1'-0"

IDENTIFICATION STAMP  
DIV. OF THE STATE ARCHITECT  
APP: 03-120551 INC:  
REVIEWED FOR  
SS ☒ FLS ☒ ACS ☒  
DATE: 01/11/2021

REVISIONS



1909B.MOD  
TURPIN & RATTAN  
ENGINEERING, INC.  
CONSULTING ENGINEERS  
1000 CALIFORNIA SUITE 200  
MONTROSE, CA 91020-1855  
818 / 249 / 0444 FAX 818 / 249 / 1487

NORWALK LA MIRADA UNIFIED SCHOOL DISTRICT  
LA MIRADA HIGH SCHOOL NEW FOOTBALL  
STADIUM PROJECT  
13520 ADELA DRIVE, LA MIRADA, CA 90638

DSA # 03-120551

NAC  
ARCHITECTURE

NAC NO. 161-19015  
DATE 12/10/2020

DSA BACKCHECK  
SUBMISSION

FLOOR PLANS  
PRESS BOX -  
ELECTRICAL

E10.01